

## Product Details

### Knuckle Unions



#### KU\_MP - Male BSPT x Poly

Sizes mm:	Sizes Inch:
20mm x 20mm	3/4" x 3/4"
20mm x 25mm	3/4" x 1"
25mm x 20mm	1" x 3/4"
25mm x 25mm	1" x 1"
25mm x 32mm	1" x 1 1/4"
32mm x 25mm	1-1/4" x 1"
32mm x 32mm	1-1/4" x 1-1/4"



#### KU\_MF - Male BSPT x Female BSPT

Sizes mm:	Sizes Inch:
20mm x 20mm	3/4" x 3/4"
25mm x 25mm	1" x 1"
32mm x 32mm	1-1/4" x 1-1/4"



#### KU\_FP - Female BSPT x Poly

Sizes mm:	Sizes Inch:
20mm x 20mm	3/4" x 3/4"
25mm x 25mm	1" x 1"
32mm x 32mm	1-1/4" x 1-1/4"



#### KU\_PP - Poly x Poly

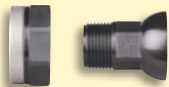
Sizes mm:	Sizes Inch:
20mm x 20mm	3/4" x 3/4"
25mm x 25mm	1" x 1"
32mm x 32mm	1-1/4" x 1-1/4"

### Knuckle Union Parts



#### KU\_SP - Socket x Poly Tail\*

Sizes mm:	Sizes Inch:	
20mm	3/4"	*Includes Common Nut
25mm	1"	
32mm	1-1/4"	



#### KU\_SM - Socket x Male Thread\*

Sizes mm:	Sizes Inch:	
20mm	3/4"	*Includes Common Nut
25mm	1"	
32mm	1-1/4"	



#### KU\_BP - Ball x Poly Tail

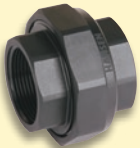
Sizes mm:	Sizes Inch:
20mm	3/4"
25mm	1"
32mm	1-1/4"



#### KU\_BF - Ball x Female Thread

Sizes mm:	Sizes Inch:
20mm	3/4"
25mm	1"
32mm	1-1/4"

### Barrel Unions



#### HBU - Female BSPT x Female BSPT

Sizes mm:	Sizes Inch:
15mm x 15mm	1/2" x 1/2"
20mm x 20mm	3/4" x 3/4"
25mm x 20mm	1" x 1"
25mm x 20mm	1" x 3/4"
32mm x 32mm	1-1/4" x 1-1/4"
32mm x 25mm	1-1/4" x 1"
40mm x 40mm	1-1/2" x 1-1/2"
50mm x 50mm	2" x 2"

## Frequently Asked Questions

- Q** Can I use your Hansen *Quick Connect* Union for easy service of my pump?
- A** Yes, by installing a Hansen *Quick Connect* Union on both the inlet and outlet you effectively have a barrel union and poly joiner in one fitting which allows you to undo two common centre nuts and easily lift your pump out for service.
- Q** I have a situation where I would like to connect into an existing stock water line out the back of the farm for filling a spray tank to save travel time when spraying. Can I use a Hansen *Quick Connect* Union for this purpose?
- A** Yes, as long as there is an isolating valve nearby you can install a poly to poly Hansen *Quick Connect* Union and purchase a ball to poly pipe tail for your tank fill pipe length and quickly hook into this line when required.
- Q** I've had to replace my suction fitting on my pump as it snapped and now I can't align my pump back to the bolts it was held in place with. Will your Hansen *Quick Connect* Union help me here?
- A** Yes, the reason your fitting failed was the same reason you can't line up the bolt holes now, the suction line was never lined up with the pump intake. Try a male to poly Hansen *Quick Connect* Union in the size you require. This will also mean you can bolt down your pump first, attach both parts of the Hansen *Quick Connect* Union to the pump and poly pipe and then just connect the fitting with common centre nut.



### HANSEN PRODUCTS (NZ) LIMITED

PO Box 809 • Whangarei • New Zealand  
 P: +64 9 430 4140 F: +64 9 430 4141  
 E: info@hansenproducts.com  
 W: www.hansenproducts.com

Available From:

**HANSEN**

Best Installed Value



# HANSEN™

## Quick Connect Unions



HD8031 2210

www.hansenproducts.com

## Best Installed Value

Hansen Products *Quick Connect* Unions incorporate the same robust time tested and trusted fitting attributes as the Hansen *Easy Fit* Poly and *True Fit* Threaded Fitting ranges that precede them.

Hansen *Quick Connect* Unions offer a comprehensive solution for easy install / uninstal of pipe work around pumps or in-line.

The Hansen *Barrel* Union is especially beneficial in tight installations where the Easy Slip Down action alleviates the need to move pipe work forwards or backwards during disconnect / reconnect.

The Hansen *Knuckle* Union joint provides extra grace where pipe work is off centre from the pump, and also a great solution for direct poly pipe connections such as lake or reservoir edges where easy system separation or winterising is required.

With over 60 years' experience in manufacturing, Hansen Products knows the importance of fluid delivery, flow and pressure within a pipe system. This has seen Hansen Products build a reputation for providing high performance, easy to use, innovative, simple products that provide our customers with "Best Installed Value".

All Hansen products carry our Limited Lifetime Warranty\*

\*For more information on our warranty, please visit [www.hansenproducts.com/legal.htm](http://www.hansenproducts.com/legal.htm)

# Strong, Compact & Easy to Use Unions

### HIGH QUALITY DURABLE MATERIALS

Manufactured from UV Stabilised High Quality Glass Fibre Reinforced Nylon and Nitrile Rubber O-Ring giving a weather, termite, fungi and bacterial resistance



### O-RING SEAL

For a leak proof connection.



### MAXIMUM WORKING PRESSURE

16 Bar (235 psi) @ 20°C

**Available in Sizes:**  
15mm, 20mm, 25mm, 32mm, 40mm, 50mm, 25x20mm, 32x25mm (1/2", 3/4", 1", 1 1/4", 1 1/2", 2", 1" x 3/4", 1 1/4" x 1")

### PRECISION HEAVY DUTY TAPERED THREADS

Gives a Strong Reliable Seal. Material is strong enough to minimise potential cross threading.



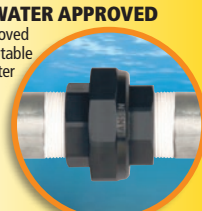
### STRONG COMPACT DESIGN

The compact design of the Hansen Quick Connect Barrel Union makes it especially suited to tight spaces where there is very little room for movement when connecting and disconnecting pump or pipe.



### POTABLE WATER APPROVED

Materials approved for use with Potable (drinkable) Water  
AS/NZS 4020  
SWRAS



### EASY TO USE

As with all Hansen fittings, simplicity & ease of use remain at the core of the Hansen Quick Connect Barrel Union.

### PUMP TO PIPE

1. Disconnect current pipe from pump by unwinding the Common Centre Nut

### PIPE TO PIPE

1. Disconnect current pipe by unwinding the Common Centre Nut

2. Connect new pipe to pipe by winding the Common Centre Nut onto the matching male thread

2. Connect the new pipe to pump by winding the Common Centre Nut onto the matching male thread

### EASY SLIP DOWN ACTION

The easy slip down action makes uninstalling pumps & pipe work a breeze! When the common nut is wound off, the pipe simply 'slips down' with virtually no extra forward or backward movement required to separate the connection.



## Technical Specifications

- All pipe work must be adequately supported
- Hansen *Quick Connect* Knuckle Union Maximum Working Pressure; 10 Bar (1000 kPa. 145 PSI) @ 20°C
- Hansen *Quick Connect* Barrel Union Maximum Working Pressure; 16 Bar (1600 kPa. 235 PSI) @ 20°C
- Poly end Knuckle Union Manufactured for use with New Zealand Low Density Polythene Pipe LDPE, EnduroFlex, Australian Rural (Class B), Irish Imperial Pipe. Also suitable for other types of flexible pipe and hose i.e. thin wall irrigation tubing and rubber hoses. 45mm fittings are designed for special applications.
- Suitable for many types of fluid. See the Knuckle & Barrel Union Chemical Resistance Chart on our website.
- Use a thread sealant on all threaded connections. We recommend LOCTITE 5331.

### Pumps



### Pipe Work



# Ultimate Flexible and Adaptable Unions

### HIGH QUALITY DURABLE MATERIALS

Manufactured from Strong 304 grade stainless steel and UV Stabilised High Quality Glass Fibre Reinforced Nylon giving a weather, termite, fungi and bacterial resistance



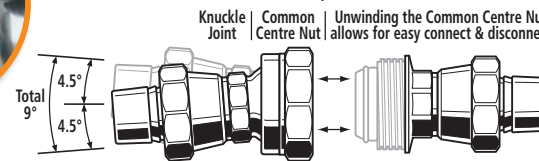
### MAXIMUM WORKING PRESSURE

10 Bar (145 psi) @ 20°C

### Total of 9 Degrees Movement

### ULTIMATE FLEXIBILITY AROUND PUMPS

The Hansen Knuckle Union is the ultimate quick connect/disconnect solution around pumps. With a flexible 'knuckle' joint of up to 9 degrees movement, now you don't have to worry if your pipe work doesn't line up exactly with your pump, the flexible Hansen Knuckle Union takes care of that for you!



### POTABLE WATER APPROVED

Materials approved for use with Potable (drinkable) Water  
AS/NZS 4020



### EASY TO USE

As with all Hansen fittings, simplicity & ease of use remain at the core of the Hansen Quick Connect Knuckle Union.

1. Line up the two ends of the Quick Connect Knuckle Union

2. Join the two parts together by winding the Common Centre Nut onto the matching Male Thread

3. Ensure the Common Centre Nut is firmly tightened. Do not over tighten.

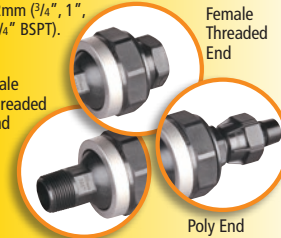
### MULTIPLE CONFIGURATIONS

Multiple connections enables this fitting to meet the needs of just about any situation. All connections available in sizes 20mm, 25mm or 32mm (3/4", 1", 1 1/4" BSPT).

Male Threaded End

Female Threaded End

Poly End



### TIME TESTED CONNECTIONS

Uses the same time tested Hansen Easy Fit and True Fit connections as in other ranges.

