

Features & Benefits

- One piece fitting - no components to lose, rust or corrode
- Fast and easy to assemble - push the pipe onto the fitting and wind on the nut. No O-Ring, No Crimping, No Solvent Cement
- Nut and Barbs provide superior double strength grip - when fitted correctly the fitting will not leak or blow off the pipe
- Manufactured from UV Stabilised High Quality Glass Fibre Reinforced Nylon giving a weather, termite, fungi and bacterial resistance
- Material Approved for use with Potable (drinkable) Water
- Low Installation costs - no specialist site equipment or skilled labour required
- Fittings demonstrate excellent hydraulic flow characteristics
- Flexibility and Versatility - in new and existing installations, saving time and money

Frequently Asked Questions

Q How tight should I tighten my fittings?

A Wind the nut by hand onto pipe as tight as possible. Use a spanner or pipe grips to tighten until nut is firm on pipe.

Q What type of pipe will Hansen *Easy Fit* Poly Fittings connect to?

A New Zealand LDPE (Low Density Polyethylene Pipe), EnduroFlex, Australian Rural Class B, Irish Imperial Polyethylene Pipes (including wash down hose and non toxic tube).

Q Can I use Hansen *Easy Fit* Fittings under driveways, paths and foundations?

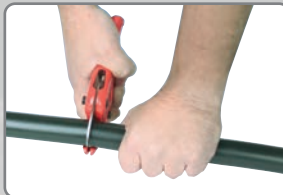
Hansen does not recommend the use of any Hansen *Easy Fit* Fittings under any driveways, paths, or foundations.

Q What temperature can I use Hansen *Easy Fit* Poly Fittings at?

A Hansen have tested all its products for use with cold water up to a maximum temperature of 60°C (140°F). We do not recommend the use of these products with temperatures higher than 60°C (140°F) as plastic expands due to temperature increases. Hansen cannot guarantee the products will perform when used with temperatures over 60°C (140°F). Hansen products that have failed in temperatures higher than 60°C (140°F) will not be covered by limited lifetime warranty.



Easy to Install



1. Cut the pipe with pipe cutters, a knife or saw. Ensure a square cut of pipe ends. Clean burrs off pipe. When making a repair in a burst pipe make sure the length of the cut away matches the length of the replacement fitting between the screwed on nuts.



2. Ensure the nut is fully wound back onto the body of the fitting. Push the pipe onto the fitting and as far as possible into the nut



3. Wind the nut onto the pipe a few turns. Tighten with spanner or pipe grips.

- All pipe work must be adequately supported.
- Use either a thread sealing paste or tape on all threaded connections, we recommend Loctite 5331
- For further technical information including chemical & temperature specifications, please visit our website: www.hansenproducts.com

Standards & Approvals

AS/NZS 4020

Hansen *Easy Fit* Poly Fittings meet the requirements for products in contact with drinking water as per AS/NZS 4020 Australia & New Zealand drinking water standard.

HANSEN PRODUCTS (NZ) LIMITED

PO Box 809 • Whangarei • New Zealand
P: +64 9 430 4140 F: +64 9 430 4141
E: info@hansenproducts.com
W: www.hansenproducts.com

Available From:

HANSEN[™]

Best Installed Value



HD8002.2210

HANSEN[™]

Easy Fit Poly Fittings



www.hansenproducts.com

Best Installed Value

In the late 1970s Bert Hansen developed a range of polyethylene (alkathene) easy to use "cold fit pipe fittings". Back then this changed the way Kiwi farmers joined pipes together. Today Hansen Products continues to develop & manufacture a range of pipe fittings based on that original 70s design.

Hansen *Easy Fit* Poly Fittings are suitable for use above or below ground, in varying operating pressures and temperatures. They are Strong, Lightweight and Compact and are available in a variety of thread combinations and connections.

With over 60 years experience in manufacturing, Hansen Products knows the importance that pipe fittings play in the performance and control of fluid delivery, flow and pressure within a pipe system. This has seen Hansen Products build a reputation for providing high performance, easy to use, innovative, simple products that provide our customers with "Best Installed Value".

All Hansen products carry our Limited Lifetime Warranty*

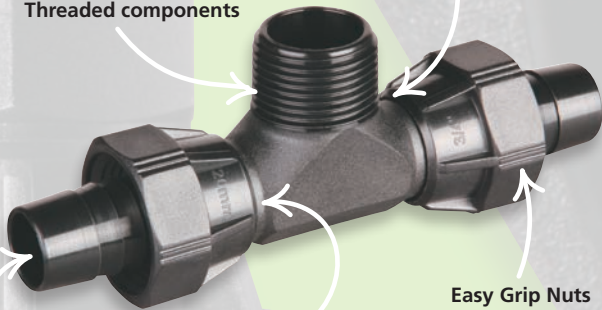
*For more information on our warranty please visit www.hansenproducts.com/legal.htm

50 Years Time Tested & Trusted *Easy Fit* Poly Fittings

Potable (Drinking) water approved

Manufactured in NZ using Best Quality Materials to withstand the harshest weather conditions

Dependable High Quality Threaded components



High Flow Rate

One Piece Fitting, No Parts to Lose

Easy Grip Nuts for rapid winding onto pipe

CONVERSIONS

15mm - 1/2"	40mm - 1 1/2"
20mm - 3/4"	45mm - 1 3/4"
25mm - 1"	50mm - 2"
32mm - 1 1/4"	

45mm - Special Application



Straight Coupling - HS

Sizes mm:	15	32	50
	20	40	
	25	45	



Long Straight Coupling - HLS

Sizes mm:	15
	20
	25



Reducing Straight Coupling - HRS

Sizes mm:	20 x 15	32 x 20	45 x 40
	25 x 15	32 x 25	50 x 40
	25 x 20	40 x 32	



Female Straight Coupling - HFS

Sizes mm:	15	32
	20	40
	25	50



Reducing Female Coupling - HRFS

Sizes mm:	20 x 15	40 x 32
	25 x 20	50 x 40
	32 x 25	



Male Straight Coupling - HMS

Sizes mm:	15	32	50
	20	40	
	25	45	



Reducing Male Coupling - HRMS

Sizes mm:	15 x 20	25 x 15
	20 x 15	25 x 20
	20 x 25	



Quick Release Coupling - HQC

Sizes mm:	25-20 (1" BSP x 3/4" Hose)
	25 (1" BSP x 1" Hose)
	32 (1 1/4" BSP x 1 1/4" Hose)
	32-25 (1 1/4" BSP x 1" Hose)



Tee Connector - HT

Sizes mm:	15	32
	20	40
	25	50



Reducing Tee Connector - HRT

Size mm:	25 x 25 x 15	40 x 40 x 25
	15 x 15 x 20	25 x 25 x 20
	20 x 20 x 15	40 x 40 x 32
	20 x 20 x 25	32 x 32 x 20
		50 x 50 x 32
		32 x 32 x 25
		50 x 50 x 40



Female Threaded Tee - HFT

Sizes mm:	15	32
	20	40
	25	50



Male Threaded Tee - HMT

Sizes mm:	20 x 15
	20 x 20



Bend - HB

Sizes mm:	15	32
	20	40
	25	50



Female Bend - HFB

Sizes mm:	15	32
	20	40
	25	50



Reducing Female Bend - HRFB

Sizes mm:	15 x 20	32 x 25
	20 x 15	40 x 32
	25 x 20	50 x 40



Male Bend Long - HMB

Sizes mm:	15
	20
	25



Reducing Male Bend (Long) - HRMB

Sizes mm:	15 x 20	25 x 20
	20 x 15	
	20 x 25	



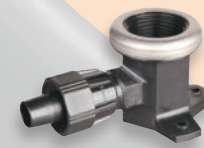
Male Bend Short - HMBS

Sizes mm:	15	32
	20	40
	25	50



Bracket Elbow - HBE

Sizes mm:	15
	20



Reducing Bracket Elbow - HRBE

Sizes mm:	15 x 20
	20 x 15



Male Camlock - HCEP

Sizes mm:	32
	40
	45



Tow Eye - PODTE

Sizes mm:	32
	40
	45



Poly Nut - HPN

Sizes mm:	15	32
	20	40
	25	45

Hansen *Easy Fit* Poly Fittings are designed for all sizes of New Zealand Low Density Polyethylene Pipe LDPE, EnduroFlex and Australian Rural (Class B). Hansen *Easy Fit* Poly Fittings are also suitable for other types of flexible pipe and hose i.e. thin wall irrigation tubing and rubber hoses. 45mm fittings are designed for special applications. *Easy Fit* Poly Fittings are PN16 rated.