

Features & Benefits

- Precision Heavy Duty Tapered Threads give a Strong Reliable Seal
- Manufactured from a Raw Material Approved For Use With Potable (drinkable) Water
- Manufactured from High Quality Glass Fibre Reinforced Nylon giving a Weather, Termite, Fungi & Bacteria Resistant
- Common Applications Include Horticultural, Agricultural, Irrigation, Marine & Plumbing
- Material strong enough to minimise potential cross threading
- WRAS - Approval for use with potable (drinkable) water as they will not leach contaminants into the water.
- Suitable for use above or below ground in varying operating pressures and temperatures
- Strong, Lightweight and Compact
- Available in a variety of thread combinations and connections.
- New Zealand Made

Frequently Asked Questions

Q How tight should I tighten my fittings?

A Do not over tighten. The right way to assemble a threaded fitting is hand tight plus one to two turns-no more! For more information on installation tips refer to the installation page.

Q Do I need to support my fittings?

A Yes. All pipe work must be adequately supported.

Q What type of sealant should I use?

A Use a thread sealant on all threaded connections. We recommend Loctite 5331.

Q Can I use Hansen *True Fit* Fittings under driveways, paths and foundations?

A Hansen does not recommend the use of any Hansen True Fit Fittings under any driveways, paths, or foundations.

Q Can I use my Hansen fittings with my swimming pool/spa pool set up?

A No, as the high concentration of chlorine used in the water for pools, will attack the material. The fitting material is only suitable for use with domestic water. Hansen products that are used in this application will not be covered by limited lifetime warranty.

Q What temperature can I use Hansen *True Fit* Threaded Fittings at?

A Hansen have tested all its products for use with cold water up to a maximum temperature of 60°C (140°F). We do not recommend the use of these products with temperatures higher than 60°C (140°F) as plastic expands due to temperature increases. Hansen cannot guarantee the products will perform when used with temperatures over 60°C (140°F). Hansen products that have failed in temperatures higher than 60°C (140°F) will not be covered by limited lifetime warranty.

Easy to Install



1.a Use a threaded paste sealant, we recommend LOCTITE 5331 or...



1.b Use a teflon tape sealant. The right sealant for threaded joints is non-hardening, compatible with plastic and doesn't add slipperiness to encourage over-torquing.




2. Screw pipe into fitting.



3. Do not over tighten. The right way to assemble a Threaded Pipe Fitting is finger tight plus one to two turns - no more!

- All pipe work must be adequately supported.
- Use either a thread sealing paste or tape on all threaded connections, we recommend Loctite 5331
- For further technical information including chemical & temperature specifications, please visit our website: www.hansenproducts.com

Standards & Approvals

 Hansen *True Fit* Threaded Fittings carry the WRAS approval by the Water Research Council in the UK which is the highest recognised water testing organisation in the world.

AS/NZS 4020 Hansen *True Fit* Threaded Fittings meet the requirements for products in contact with drinking water as per AS/NZS 4020 Australia & New Zealand drinking water standard.

HANSEN PRODUCTS (NZ) LIMITED

PO Box 809 • Whangarei • New Zealand
P: +64 9 430 4140 F: +64 9 430 4141
E: info@hansenproducts.com
W: www.hansenproducts.com

Available From:

HANSEN

Best Installed Value



HD0001 2211

HANSEN™

True Fit Threaded Fittings



www.hansenproducts.com

Best Installed Value

After the success of the Hansen Polythene Pipe Fittings, Hansen Products decided to design and manufacture a range of Threaded Pipe Fittings as there was a high demand for non-metallic threaded fittings. The Hansen range of *True Fit* Threaded Fittings is one of the largest ranges of durable, high strength, commercial quality Threaded Pipe Fittings in the Southern Hemisphere with over 250 products in the range.

Hansen *True Fit* Threaded Fittings are suitable for use above or below ground, in varying operating pressures and temperatures. They are Strong, Lightweight and Compact and are available in a variety of thread combinations and connections.

With over 60 years experience in manufacturing, Hansen Products knows the importance that pipe fittings play in the performance and control of fluid delivery, flow and pressure within a pipe system. This has seen Hansen Products build a reputation for providing high performance, easy to use, innovative, simple products that provide our customers with "Best Installed Value".

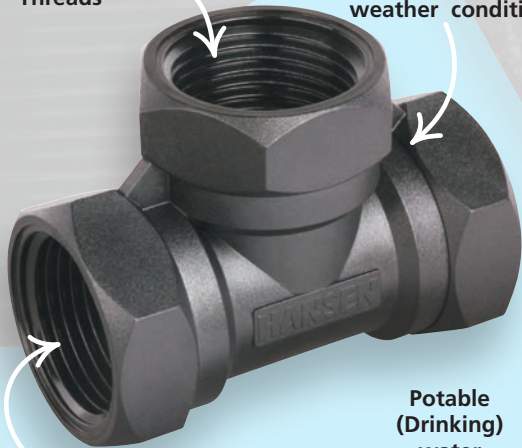
All Hansen products carry our Limited Lifetime Warranty*

*For more information on our warranty, please visit www.hansenproducts.com/legal.htm

Reliable Commercial Quality Threaded Fittings

Precision Heavy Duty Tapered Threads

Manufactured in NZ using Best Quality Materials to withstand the harshest weather conditions



High Flow Rate

Potable (Drinking) water approved



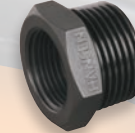
Hex Nipple - SHN

Sizes mm:	6	20	50
	8	25	65
	10	32	80
	15	40	100



Reducing Hex Nipple - SRHN

Sizes mm:	15 x 10	32 x 25	50 x 32	80 x 50
	8 x 6	20 x 10	40 x 20	50 x 40
	10 x 6	20 x 15	40 x 25	65 x 32
	10 x 8	25 x 15	40 x 32	65 x 40
	15 x 6	25 x 20	50 x 20	65 x 50
	15 x 8	32 x 20	50 x 25	80 x 40



Reducing Bush - SRB

Sizes mm:	25 x 8	40 x 15	50 x 32	80 x 65
	15 x 6	25 x 10	40 x 20	50 x 40
	15 x 8	25 x 15	40 x 25	65 x 32
	15 x 10	25 x 20	40 x 32	65 x 40
	20 x 8	32 x 15	50 x 15	65 x 50
	20 x 10	32 x 20	50 x 20	80 x 40
	20 x 15	32 x 25	50 x 25	80 x 50



Hex Screw Plug - SP

Sizes mm:	6	20	50
	8	25	65
	10	32	80
	15	40	100



Hex Socket - SS

Sizes mm:	15	32	65
	20	40	80
	25	50	100



Reducing Hex Socket - SRS

Sizes mm:	32 x 20	40 x 32	50 x 40	80 x 65
	20 x 15	32 x 25	50 x 20	65 x 40
	25 x 15	40 x 20	50 x 25	65 x 50
	25 x 20	40 x 25	50 x 32	80 x 50



Female Threaded Elbow - SE

Sizes mm:	15	32	65
	20	40	80
	25	50	100



Male/Female Threaded Elbow - SMFE

Sizes mm:	15	32
	20	40
	25	50



Female Threaded Tee - ST

Sizes mm:	15	32	65
	20	40	80
	25	50	100



Hex Screw Cap - SC

Sizes mm:	15	32	65
	20	40	80
	25	50	100



Male Hose Tail - SMHT

Sizes mm:	6	15	32	80
	8	20	40	
	10	25	50	



Reducing Male Hose Tail - SRMHT

Sizes mm:	8 x 6	10 x 6
	8 x 10	10 x 8



Nut & Hose Tail - SNT

Sizes mm:	15	25	32	80
	20	25 x 15	40	
	20 x 15	25 x 20	50	



Nut & Tail Elbow - SNTTE

Sizes mm:	20
	25



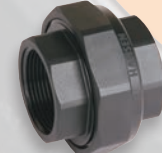
Male Female Adaptor - SMFA

Sizes mm:	15 x 20
-----------	---------



Tank Plug - TP

Sizes mm:	50
-----------	----



Barrel Union - SBU

Sizes mm:	15	25	32	40
	20	25 x 20	32 x 25	50



Tow Eye - HTE

Sizes mm:	50 NPT
	50 BSP



Nut & Tail Washer - SNTW

Sizes mm:	15	32	65
	20	40	80
	25	50	

CONVERSIONS

6mm - 1/8"	32mm - 1 1/4"
8mm - 1/4"	40mm - 1 1/2"
10mm - 3/8"	50mm - 2"
15mm - 1/2"	65mm - 2 1/2"
20mm - 3/4"	80mm - 3"
25mm - 1"	100mm - 4"